

NAKNAK

1/2

CORRUGATE

Designer

Yenwen Tseng

Material

Steel, Wood, Magnet

Finishing

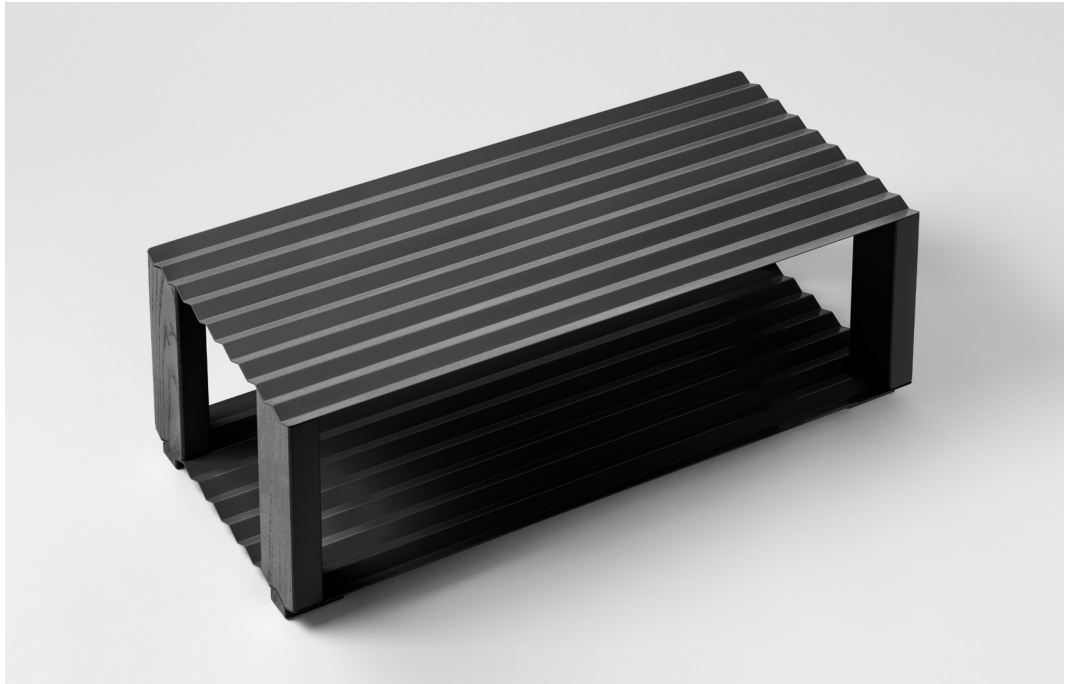
Powder Coating

Texture

Fine Sand

Loading

5 kgs



CORRUGATE is a shoe tray for storing shoes with dirty soles properly. A corrugated sheet creates convex edges to hold shoes and concave spaces to gather sand, tiny rocks, rainwater, and winter slush naturally. With its magnet fastenings it can be assembled within seconds and disassembled at any time for easy washing and cleaning. CORRUGATE organizes the way for storing your beloved shoes.

CORRUGATE 浪板鞋架靈感源自設計師在寒帶國家生活的經驗，利用浪板造型的凹折處可自然地收集鞋底的石子、灰塵及融化的雪水等，保持下層鞋子及地板的清潔。磁鐵固定結構讓人們可輕易拆卸清潔浪板鞋架並快速組裝回去。

NAKNAK

2/2

CORRUGATE

Designer

Yenwen Tseng

Material

Steel, Wood, Magnet

Finishing

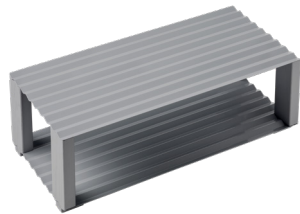
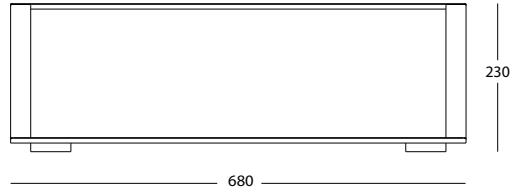
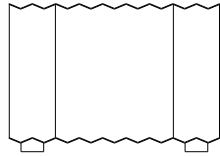
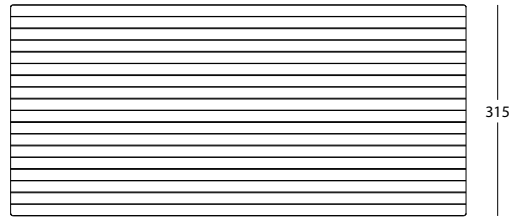
Powder Coating

Texture

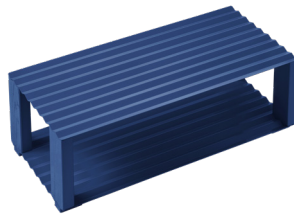
Fine Sand

Loading

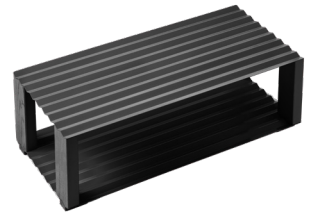
5 kgs



Dark Gray

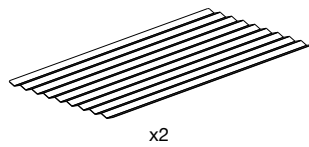


Blue



Black

Contents



+



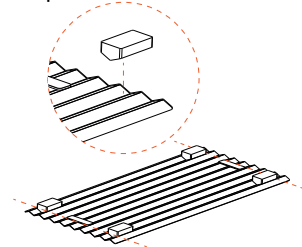
+



x4

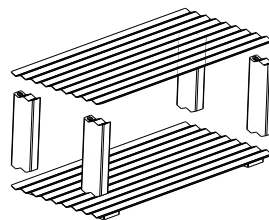
Assembly

Step1



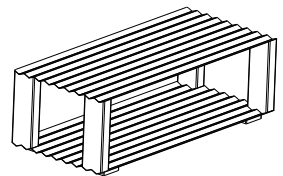
Pick one of the sheets as the bottom one, and let the surface with the fixed structure face up. Put bases on four corners of the sheet. (Bases align with the fixed structure are recommended.)

Step2



Flip the sheet over and put four wooden legs on each corner of the sheet then attach the other sheet on top.

Step3



Complete.